



VOR 7123 WATER JOURNEY™ JET DANCE



Ideal age group: for all ages

PRODUCT HIGHLIGHTS

- Mist, Block and Intensify or Arch water sequences are initiated by water draining into their associated Drain/Jet Activator
- Direct the flow of water with the Sluices to activate the desired water choreography
- Surface pattern is inspired by the footprint of water as it trickles down the river bed
- Made of glass fiber reinforced colored concrete (GFRC) for durability and sustainable play
- This product can also be configured with the rest of the Water Journey™ collection for more play opportunities

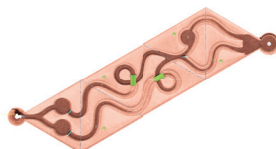


*DANCE WITH
THE WATER!*

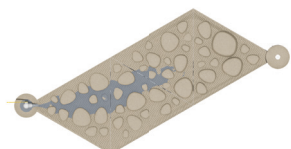
EXPAND WITH:



• Labyrinth
(VOR 7120)



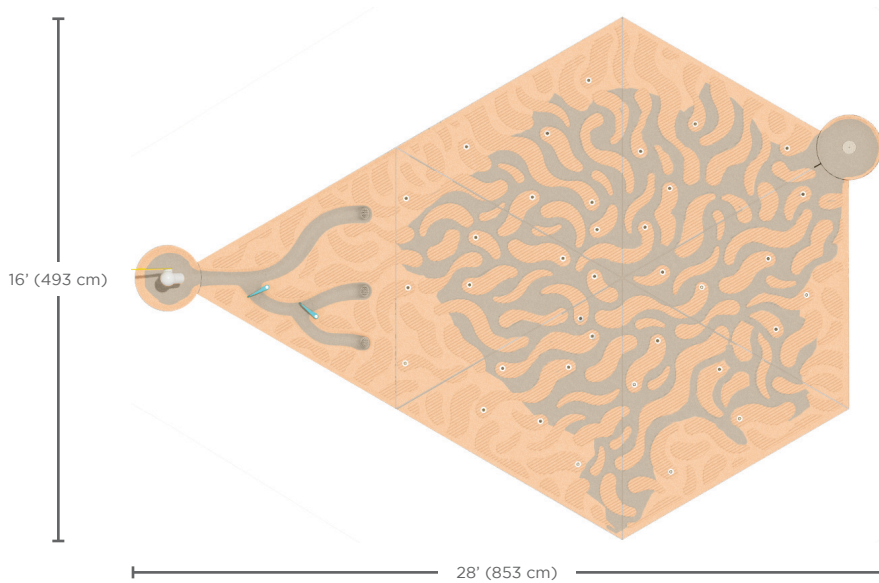
• Race
(VOR 7121)



• Tide Pool
(VOR 7122)



World leader in aquatic play solutions with over 5,000 installations worldwide
vortex-intl.com • info@vortex-intl.com
1.877.586.7839 (free USA/CND) • +1.514.694.3868 (Intl.)



W/L

336/194 in
853/493 cm

Flow

Pump:
7-8 GPM
27-30 LPM

Jet Dance:
8-18 GPM
30-68 LPM

Color Choices: Orange

INTERACTIVE FEATURES

This Water Journey™ features the following technologies that are unique to Vortex.



PUMP (1)

- To release the water into the Water Journey™ system
- Each pumping action releases a small amount of water and with persistent pumping the amount of water increases to a breaking point.
- Powder coated stainless steel
- Can be a point of connection to other Water Journeys™



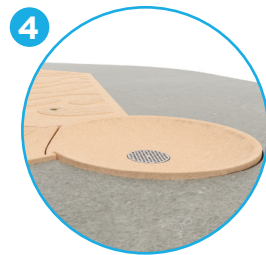
SLUICE (2)

- To steer the water flow and change its course
- Resistant and durable polyurethane



DRAIN/JET ACTIVATOR (3)

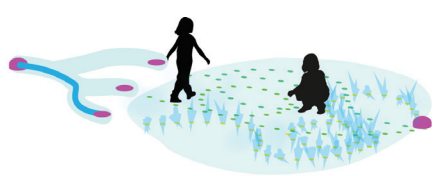
- Equipped with water flow sensors that will trigger jets
- Stainless steel



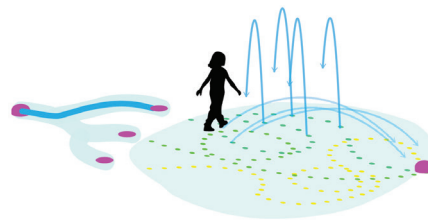
DRAIN BASIN (1)

- Can be a point of connection to other Water Journeys™
- Painted stainless steel and glass fiber reinforced colored concrete

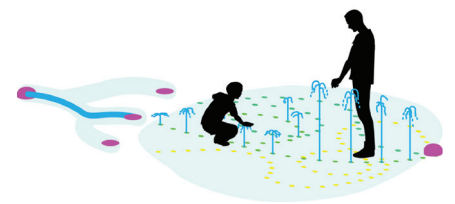
WATER EFFECTS



• Mist jet (9)



• Dynamic arc jet (12)



• Block and Intensify jet (15)



World leader in aquatic play solutions with over 5,000 installations worldwide
vortex-intl.com • info@vortex-intl.com
1.877.586.7839 (free USA/CND) • +1.514.694.3868 (Intl.)